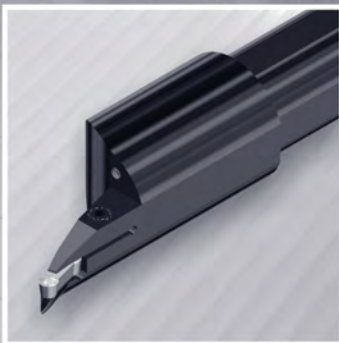
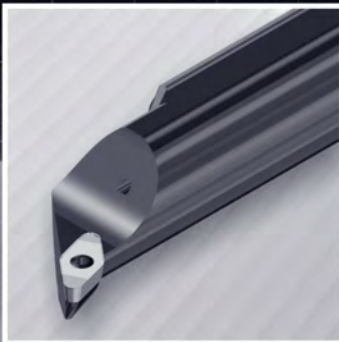


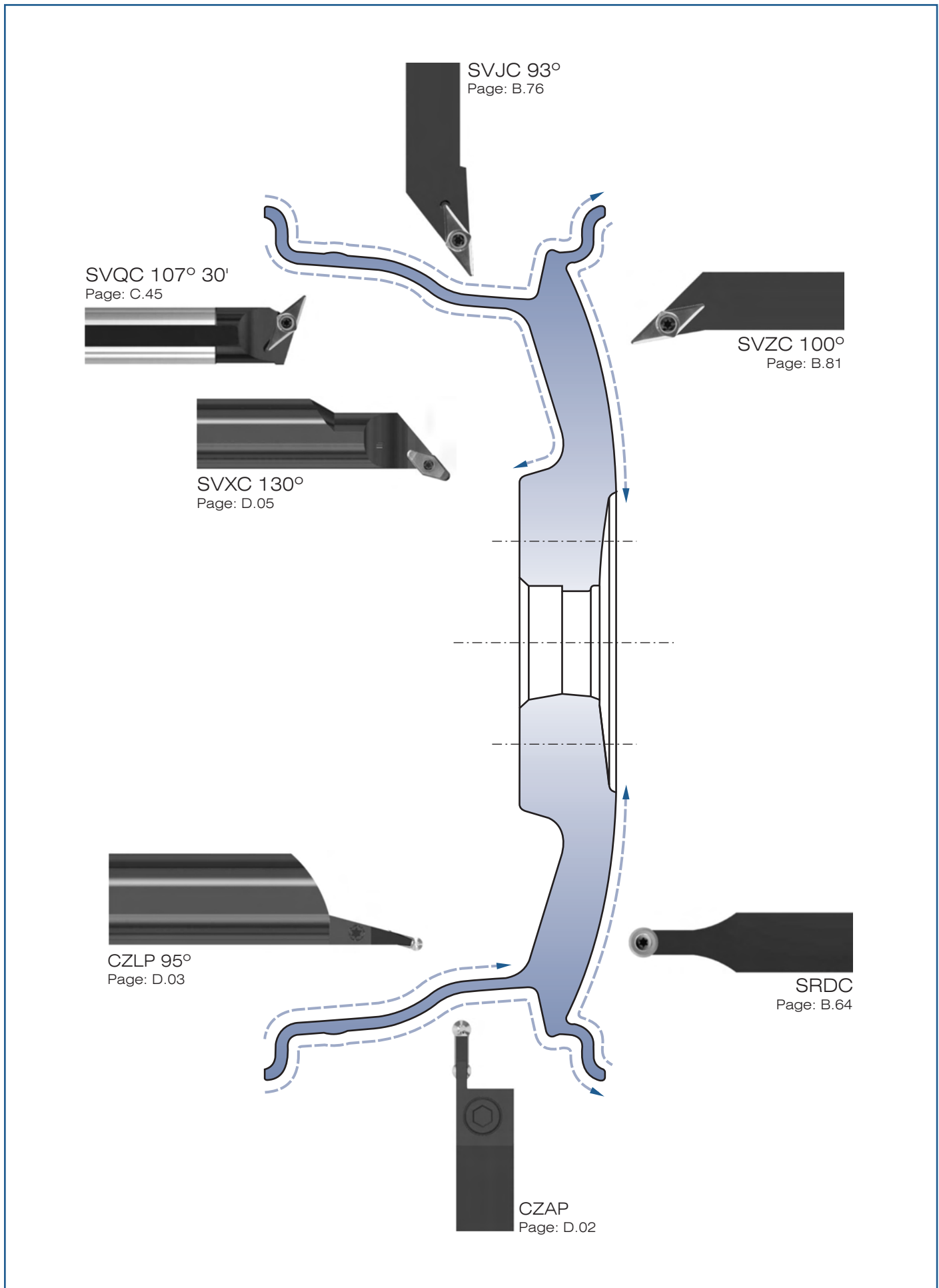
# Aluminium

Inserts

General turning

Aluminium  
wheel turning





SVQC 107° 30'  
Page: C.45

SVJC 93°  
Page: B.76

SVZC 100°  
Page: B.81

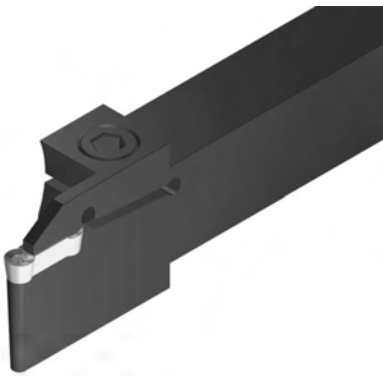
SVXC 130°  
Page: D.05

CZLP 95°  
Page: D.03

SRDC  
Page: B.64

CZAP  
Page: D.02

- Inserts
- General turning
- Aluminium wheel turning

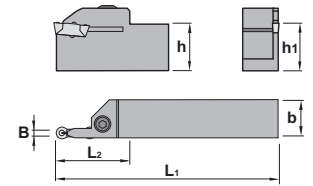


**Characteristics:**



Double sided inserts with radius from 3 to 4 mm.  
The "V" positioning system of the pocket and the clamp integrated to the tool ensure maximum security and repetitivity on the dimensions when the insert is changed.


**Applications:**

External wheel turning.



<b>CZAP</b>		<b>h=h1</b>	<b>b</b>	<b>L1</b>	<b>L2</b>	<b>B</b>	<b>Insert size</b>	<b>⚖️</b>
Ref.	<b>CZAPR2525M30</b>	25	25	150	24	6	GXGP-253.0	0,550
	<b>CZAPR2525M40</b>	25	25	150	24	6	GXGP-254.0	0,550
	<b>CZAPR3232P40</b>	32	32	170	24	8	GXGP-254.0	1,100

Ref.	CZAPR2525M30	CZAPR2525M40	CZAPR3232P40
			
	1906	1906	1906
	5005	5005	5005

<b>GXGP-AL</b>		<b>l</b>	<b>s</b>	Double-ended insert			
Ref.	<b>GXGP-253.0-AL</b>	31,00	6,0				
	<b>GXGP-254.0-AL</b>	31,00	8,0				
For more information see page: A.25							
<b>GXGP-AL</b>							
							



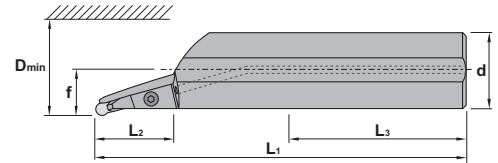
**Characteristics:**

Double sided inserts with radius from 3 to 4 mm.

The "V" positioning system of the pocket and the clamp integrated to the tool ensure maximum security and repetitivity on the dimensions when the insert is changed.

**Applications:**

Internal wheel turning.



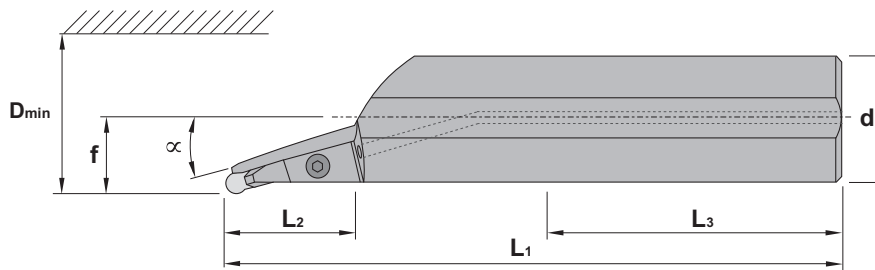
## CZLP 95°

Ref.	d	h	L1	L2	L3	f	Dmin	Insert size	kg
A40T-CZLPR-30	40	37	300	40	109	28	200	GXGP-253.0	2,650
A40T-CZLPR-40	40	37	300	80	109	28	200	GXGP-254.0	2,650

Ref.	A40T-CZLPR-30	A40T-CZLPR-40
	1396	1396
	5005	5005

## Enquiry form

If you need any modification from the standard, please submit this enquiry form



Dimensions	d	h	L1	L2	L3	f	Dmin	α

Comments: .....

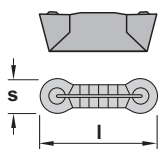
.....

.....

.....

Ref.	GXGP-AL		Double-ended insert	
	l	s		
GXGP-253.0-AL	31,00	6,0		
GXGP-254.0-AL	31,00	8,0		
GXGP-AL				

For more information see page: A.25



Inserts

General turning

Aluminium wheel turning

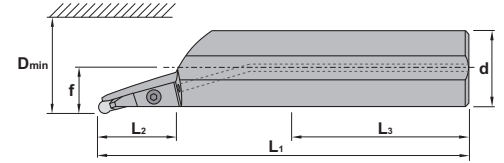


**Characteristics:**

Double sided inserts with radius from 3 to 4 mm.  
The "V" positioning system of the pocket and the clamp integrated to the tool ensure maximum security and repetitivity on the dimensions when the insert is changed.

**Applications:**

Internal wheel turning.

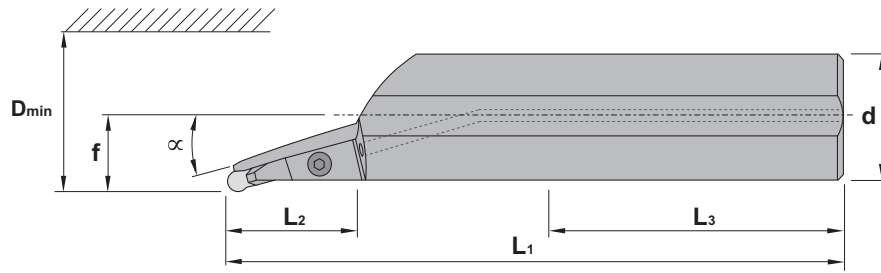


<b>CZXP 105°</b>		d	h	L1	L2	L3	f	Dmin	Insert size	kg
Ref.	A40T-CZXPR-40	40	37	300	80	80	28	55	GXGP-254.0	2,650

Ref.	A40T-CZXPR-40		1396		5005
------	---------------	--	------	--	------

**Enquiry form**

If you need any modification from the standard, please submit this enquiry form



Dimensions	d	h	L1	L2	L3	f	Dmin	$\alpha$

Comments: .....

.....

.....

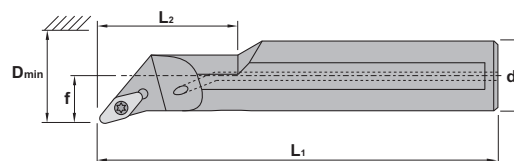
.....

	<b>GXGP-AL</b>			Double-ended insert
	Ref.	l	s	
	GXGP-254.0-AL	31,00	8,0	For more information see page: A.25
	GXGP-AL			



**Characteristics:**  
 Multipurpose profiling boring bar equipped with rhombic positive insert (angle 35°).  
 The center screw ensures good rigidity and chip flow.

**Applications:**  
 Internal wheel turning.



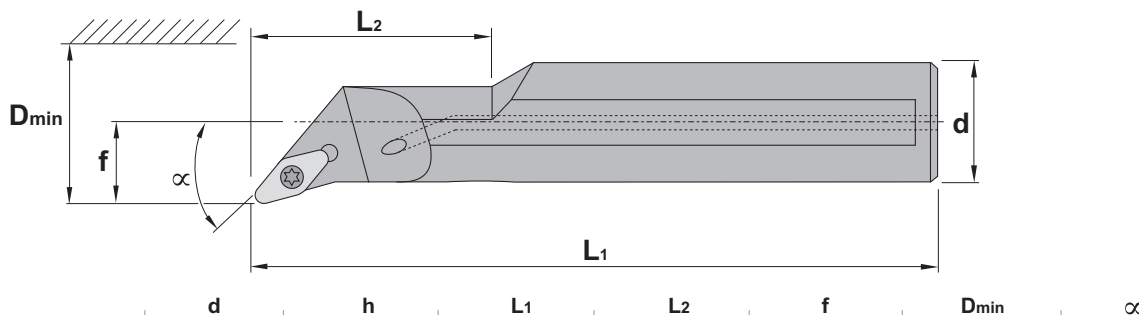
## SVXC 130°

Ref.	d	h	L1	L2	f	Dmin	Insert size	
A40S-SVXCR/L-22	40	37	250	80	27	45	VC..2205..	2,200

Ref.		
A40S-SVXCR/L-22	1250	5520

## Enquiry form

If you need any modification from the standard, please submit this enquiry form



Dimensions	d	h	L1	L2	f	Dmin	α
------------	---	---	----	----	---	------	---

Comments: .....

.....

.....

.....

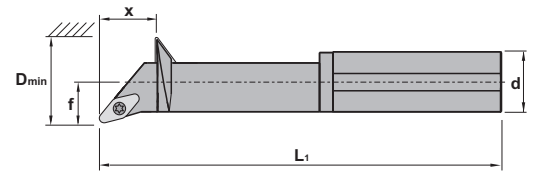
		VCGT			Positive 7° clearance - 35° rhombic inserts
Ref.		l	s	d	
	VCGT 2205..	22,10	5,56	12,70	For more information see page: A.32
	VCGT-AL				
	VCGT-AP				

Aluminium wheel turning  
 Automatic lathes  
 Ceramic tools  
 Parting and grooving  
 Threading  
 Drills  
 Cartridges  
 Brazed tools  
 Tooling

- Inserts
- General turning
- Aluminium wheel turning

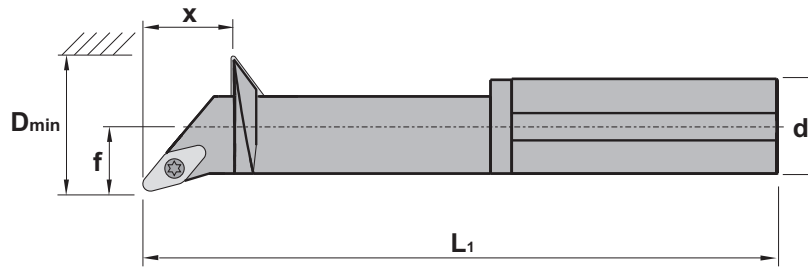
**Characteristics:**  
 Multipurpose profiling boring bar equipped with rhombic positive insert (angle 35°).  
 The center screw ensures good rigidity and chip flow.

**Applications:**  
 Internal wheel turning.



### Enquiry form

If you need any modification from the standard, please submit this enquiry form



Dimensions	d	h	L1	x	f	Dmin	$\alpha$
Comments: .....							

VCGT		l	s	d	Positive 7° clearance - 35° rhombic inserts
Ref.	VCGT 2205..	22,10	5,56	12,70	
For more information see page: A.32					
VCGT-AL	VCGT-AP				



Very often some special tools are required to achieve different kinds of application, either to reduce the time of machining or because there is no standard tool which can accomplish a specific machining operation. Eines CANELA gives to his customers the possibility of manufacturing this kind of tooling, starting from a drawing or making a study about the piece which must be machined. The wide range of possibilities offered by the manufacture of special tooling helps to solve all kind of machining problems from the small to the aerospace industry.