

- 5.1. EXPANDING CHUCKS
- 5.2. THERMAL EXPANDING CHUCKS
- 5.3. TRIBOS POLYGON CHUCKS
- 5.4. MECHANICAL CHUCKS

FREZITE 

CLAMPING SYSTEMS

Frezite Metal Division

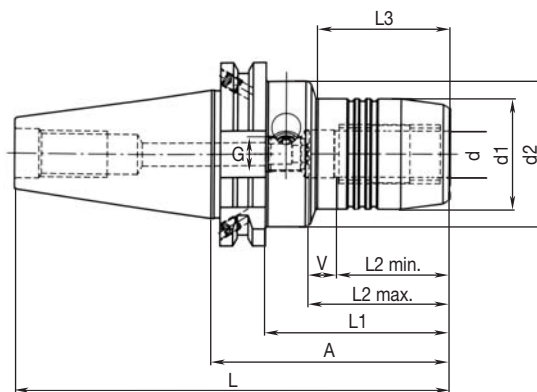


Art. 9810 HYDRAULIC CHUCK ISO 40

ISO 40 location shank to DIN 69871 AD/B with axial tool length adjustment

Application:

- Clamping diameter: 6-25 mm
- For shank form: HA (DIN 6535)

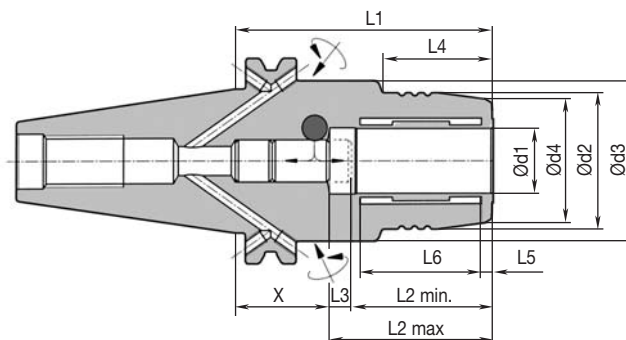


Dimensions

Nominal size ISO	Ø d	Ø d1	Ø d2	A	L	L1	L2 min.	L2 max.	L3	G	Adjustment V	Weight (kg)	Art. N°.
40	6	26	49.5	80.5	148.9	61.5	27	37	29.5	M5	10	1.40	9810.0060
40	8	28	49.5	80.5	148.9	61.5	27	37	30.0	M6	10	1.40	9810.0080
40	10	30	49.5	80.5	148.9	61.5	31	41	31.0	M8x1	10	1.40	9810.0100
40	12	32	49.5	80.5	148.9	61.5	36	46	31.5	M10x1	10	1.40	9810.0120
40	16	38	49.5	80.5	148.9	61.5	39	49	33.0	M12x1	10	1.40	9810.0160
40	20	42	49.5	80.5	148.9	61.5	41	51	34.0	M16x1	10	1.50	9810.0200
40	25	55	66.0	80.5	148.9	61.5	47	57	22.0	M16x1	10	1.90	9810.0250

Art. 9818 HYDRAULIC CHUCK ISO 40

SK40 location shank
DIN 69871 AD/B with radial length adjustment, short, slim design



Nominal size ISO	Ø d1	Ø d2	Ø d3	Ø d4	X	L1	L2 min.	L2 max.	L3	L4	L5	L6	Weight (kg)	Art. N°.
40	20	42	49.5	37.5	29.5	80.5	41	51	10	34	3.7	37.8	1.6	9818.1200

Art.9811 HYDRAULIC CHUCK HSK-A TO DIN 69882-7

Art.9812

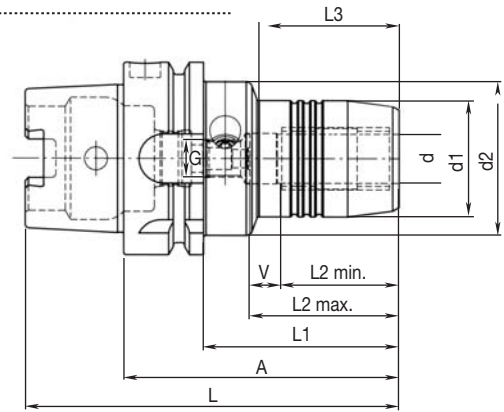
Art.9813

Art.9814

Location shank HSK-A to DIN 69893-1 with axial tool length adjustment

Application:

- Clamping diameter: 6-25 mm
- For shank form: HA (DIN 6535)



Dimensions

Nominal size HSK-A	Ø d	Ø d1	Ø d2	A	L	L1	L2 min.	L2 max.	L3	G	Adjustment V	Weight (kg)	Art. N°.
50	6	26	40	70	95	44	27	37	28	M5	10	0.80	9811.0060
50	8	28	40	70	95	44	27	37	28	M6	10	0.80	9811.0080
50	10	30	40	75	100	49	31	41	34	M8x1	10	0.80	9811.0100
50	12	32	40	85	110	59	36	46	44	M10x1	10	0.80	9811.0120
50	14	34	40	85	110	59	36	46	44	M10x1	10	0.80	9811.0140
50	16	38	53	90	115	64	39	49	30	M12x1	10	1.10	9811.0160
50	18	40	57	90	115	64	39	49	30	M12x1	10	1.10	9811.0180
50	20	42	60	90	115	64	41	51	29	M16x1	10	1.10	9811.0200
<hr/>													
63	6	26	50	70	102	44	27	37	24	M5	10	1.10	9812.0060
63	6	26	50	150	182	124	27	37	103	M5	10	1.50	9812.1060
63	6	26	50	200	232	174	27	37	153	M5	10	1.70	9812.2060
63	8	28	50	70	102	44	27	37	24	M6	10	1.10	9812.0080
63	8	28	50	150	182	124	27	37	104	M6	10	1.50	9812.1080
63	8	28	50	200	232	174	27	37	154	M6	10	1.70	9812.2080
63	10	30	50	80	112	54	31	41	35	M8x1	10	1.10	9812.0100
63	10	30	50	150	182	124	31	41	104	M8x1	10	1.50	9812.1100
63	10	30	50	200	232	174	31	41	154	M8x1	10	1.80	9812.2100
63	12	32	50	85	117	59	36	46	40	M10x1	10	1.10	9812.0120
63	12	32	50	150	182	124	36	46	105	M10x1	10	1.50	9812.1120
63	12	32	50	200	232	174	36	46	155	M10x1	10	1.80	9812.2120
63	14	34	50	85	117	59	36	46	40	M10x1	10	1.20	9812.0140
63	14	34	50	150	182	124	36	46	105	M10x1	10	1.70	9812.1140
63	14	34	50	200	232	174	36	46	155	M10x1	10	2.00	9812.2140
63	16	38	50	90	122	64	39	49	46	M12x1	10	1.30	9812.0160
63	16	38	50	150	182	124	39	49	106	M12x1	10	1.80	9812.1160
63	16	38	50	200	232	174	39	49	156	M12x1	10	2.20	9812.2160
63	18	40	50	90	122	64	39	49	47	M12x1	10	1.30	9812.0180
63	18	40	50	150	182	124	39	49	107	M12x1	10	1.90	9812.1180
63	18	40	50	200	232	174	39	49	157	M12x1	10	2.30	9812.2180
63	20	42	50	90	122	64	41	51	48	M16x1	10	1.30	9812.0200
63	20	42	50	150	182	124	41	51	108	M16x1	10	1.90	9812.1200
63	20	42	50	200	232	174	41	51	158	M16x1	10	2.50	9812.2200
63	25	57	63	120	152	94	47	57	59	M16x1	10	2.30	9812.0250
<hr/>													
80	6	26	50	70	110	44	27	37	24	M5	10	1.50	9813.0060
80	8	28	50	70	110	44	27	37	24	M6	10	1.50	9813.0080
80	10	30	50	80	120	54	31	41	35	M8x1	10	1.50	9813.0100
80	12	32	50	85	125	59	36	46	40	M10x1	10	1.60	9813.0120
80	14	34	50	85	125	59	36	46	40	M10x1	10	1.60	9813.0140
80	16	38	50	95	135	69	39	49	51	M12x1	10	1.70	9813.0160
80	18	40	50	95	135	69	39	49	51	M12x1	10	1.80	9813.0180
80	20	42	50	95	135	69	41	51	52	M16x1	10	1.80	9813.0200
80	25	57	63	110	150	84	47	57	65	M16x1	10	2.60	9813.0250
<hr/>													
100	6	26	50	75	125	46	27	37	26	M5	10	2.40	9814.0060
100	8	28	50	75	125	46	27	37	26	M6	10	2.40	9814.0080
100	10	30	50	90	140	61	31	41	42	M8x1	10	2.50	9814.0100
100	12	32	50	95	145	66	36	46	47	M10x1	10	2.50	9814.0120
100	14	34	50	95	145	66	36	46	47	M10x1	10	2.50	9814.0140
100	16	38	50	100	150	71	39	49	53	M12x1	10	2.70	9814.0160
100	18	40	50	100	150	71	39	49	53	M12x1	10	2.70	9814.0180
100	20	42	50	105	155	76	41	51	59	M16x1	10	3.20	9814.0200
100	25	57	50	110	160	81	47	57	62	M16x1	10	3.30	9814.0250

Art. 9815 HYDRAULIC CHUCK HSK-A TO DIN 69882-7

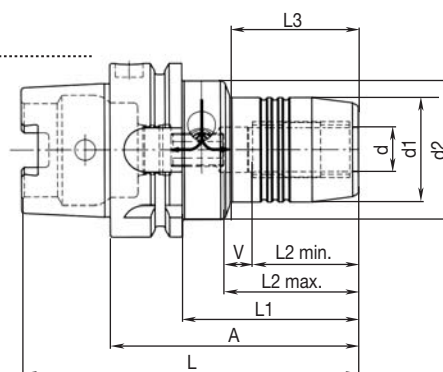
Art. 9816

Art. 9817

Location shank HSK-A to DIN 69893-1 with radial tool length adjustment

Application:

- For shank form: HA (DIN 6535)



Dimensions

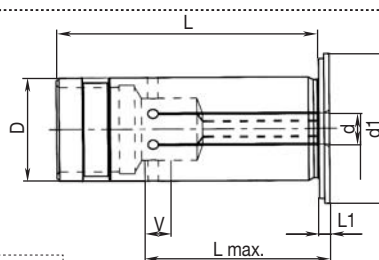
Nominal size HSK-A	Ø d	Ø d1	Ø d2	A	L	L1	L2 min.	L2 max.	L3	Adjustment V	Weight (kg)	Art. N°.
50	6	26	40	80	105	54	27	37	35.0	10	0.80	9815.0060
50	8	28	40	80	105	54	27	37	36.0	10	0.80	9815.0080
50	10	30	40	85	110	59	31	41	38.0	10	0.90	9815.0100
50	12	32	40	90	115	64	36	46	40.0	10	0.90	9815.0120
50	14	34	40	90	115	64	36	46	46.0	10	0.90	9815.0140
50	16	38	53	95	120	69	39	49	36.5	10	1.20	9815.0160
50	18	40	57	95	115	69	39	49	36.5	10	1.10	9815.0180
50	20	42	60	100	125	74	41	51	39.0	10	1.10	9815.0200
63	6	26	50	80	112	54	27	37	33.0	10	1.10	9816.0060
63	8	28	50	80	112	54	27	37	33.0	10	1.10	9816.0080
63	10	30	50	85	117	59	31	41	38.0	10	1.10	9816.0100
63	12	32	50	90	122	64	36	46	40.0	10	1.20	9816.0120
63	14	34	50	90	122	64	36	46	46.0	10	1.20	9816.0140
63	16	38	50	95	127	69	39	49	51.0	10	1.30	9816.0160
63	18	40	50	95	127	69	39	49	52.0	10	1.30	9816.0180
63	20	42	50	100	132	74	41	51	51.0	10	1.40	9816.0200
63	25	57	63	120	152	94	47	57	54.5	10	2.30	9816.0250
100	6	26	63	85	135	56	27	37	33.0	10	2.50	9817.0060
100	8	28	63	85	135	56	27	37	33.0	10	2.70	9817.0080
100	10	30	63	90	140	61	31	41	36.0	10	2.80	9817.0100
100	12	32	63	95	145	66	36	46	40.0	10	2.80	9817.0120
100	14	34	63	95	145	66	36	46	41.0	10	2.70	9817.0140
100	16	38	63	100	150	71	39	49	46.0	10	2.90	9817.0160
100	18	40	63	100	150	71	39	49	46.0	10	2.80	9817.0180
100	20	42	75	105	155	76	41	51	51.0	10	3.20	9817.0200
100	25	57	75	115	165	86	47	57	55.5	10	3.90	9817.0250

Art. 9819 ADAPTOR SLEEVE

For expanding chucks to reduce clamping diameter

Application:

- Without peripheral cooling: collar closed, sealed up to max. 80 bar
- For shank form HA, HB, HE (DIN 6535)



Dimensions

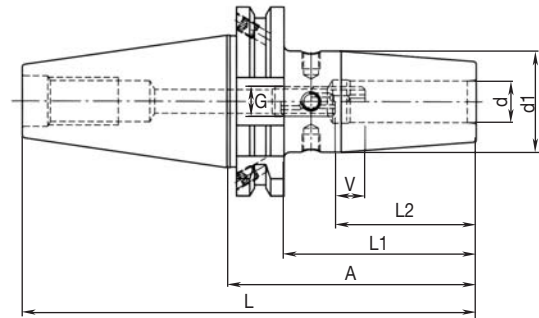
D	Ø d	Ø d1	L	Lmax.	L1	Adjustment V	Weight (kg)	Art. N°.
12	3	19	45.0	26.5	2	10	0.10	9819.0120
12	4	19	45.0	26.5	2	10	0.10	9819.1120
12	6	19	45.0	34.5	2	10	0.10	9819.2120
12	8	19	45.0	34.5	2	10	0.10	9819.3120
20	3	29	50.5	28.5	2	10	0.10	9819.0200
20	4	29	50.5	28.5	2	10	0.10	9819.1200
20	6	29	50.5	37.5	2	10	0.10	9819.2200
20	8	29	50.5	37.5	2	10	0.10	9819.3200
20	10	29	50.5	42.5	2	10	0.10	9819.4200
20	12	29	50.5	47.5	2	10	0.10	9819.5200
20	14	29	50.5	47.5	2	10	0.10	9819.6200
20	16	29	50.5	47.5	2	10	0.10	9819.7200



Art. 9820 THERMAL EXPANDING CHUCK ISO 40

Location shank ISO 40 to DIN 69871 AD/B with axial tool length adjustment

Application:
- For shaft form: HA, HB, HE (DIN 6535)



Nominal size ISO	Dimensions						Adjustment V	Weight (kg)	Art. N°.
	Ø d	Ø d1	A	L	L1	L2			
40	6	27	80	148.4	61	36	10	1.00	9820.0060
40	6	27	130	198.4	111	36	10	1.20	9820.1060
40	6	27	160	228.4	141	36	10	1.40	9820.2060
40	8	27	80	148.4	61	36	10	1.00	9820.0080
40	8	27	130	198.4	111	36	10	1.20	9820.1080
40	8	27	160	228.4	141	36	10	1.40	9820.2080
40	10	32	80	148.4	61	42	10	1.05	9820.0100
40	10	32	130	198.4	111	42	10	1.30	9820.1100
40	10	32	160	228.4	141	42	10	1.60	9820.2100
40	12	32	80	148.4	61	47	10	1.05	9820.0120
40	12	32	130	198.4	111	47	10	1.30	9820.1120
40	12	32	160	228.4	141	47	10	1.60	9820.2120
40	14	34	80	148.4	61	47	10	1.10	9820.0140
40	14	34	130	198.4	111	47	10	1.40	9820.1140
40	14	34	160	228.4	141	47	10	1.65	9820.2140
40	16	34	80	148.4	61	50	10	1.05	9820.0160
40	16	34	130	198.4	111	50	10	1.40	9820.1160
40	16	34	160	228.4	141	50	10	1.60	9820.2160
40	18	42	80	148.4	61	50	10	1.20	9820.0180
40	18	42	130	198.4	111	50	10	1.50	9820.1180
40	18	42	160	228.4	141	50	10	1.70	9820.2180
40	20	42	80	148.4	61	52	10	1.20	9820.0200
40	20	42	130	198.4	111	52	10	1.50	9820.1200
40	20	42	160	228.4	141	52	10	1.95	9820.2200
40	25	53	100	168.4	81	58	10	1.60	9820.0250
40	25	53	130	198.4	111	58	10	1.80	9820.1250
40	25	53	160	228.4	141	58	10	2.55	9820.2250

Art.9822 THERMAL EXPANDING CHUCK HSK-A TO DIN 69882-8

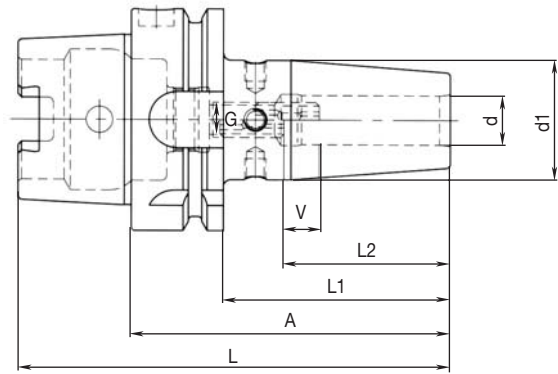
Art.9823

Art.9824

Location shank HSK-A to DIN 69893-1 with axial tool length adjustment

Application:

- For shaft form: HA, HB, HE (DIN 6535)



Nominal size HSK-A	Dimensions						Adjustment V	Weight (kg)	Art. N°.
	Ø d	Ø d1	A	L	L1	L2			
50	6	27	80	105	54	36	10	0.70	9822.0060
50	8	27	80	105	54	36	10	0.75	9822.0080
50	10	32	85	110	59	41	10	0.80	9822.0100
50	12	32	90	115	64	46	10	0.80	9822.0120
50	14	34	90	115	64	46	10	0.90	9822.0140
50	16	34	95	120	69	49	10	0.90	9822.0160
50	18	42	95	120	69	49	10	1.05	9822.0180
50	20	42	100	125	74	51	10	1.10	9822.0200
63	6	27	80	112	54	36	10	1.00	9823.0060
63	6	27	120	152	94	36	10	1.05	9823.1060
63	6	27	160	192	134	36	10	1.40	9823.2060
63	8	27	80	112	54	36	10	0.90	9823.0080
63	8	27	120	152	94	36	10	1.05	9823.1080
63	8	27	160	192	134	36	10	1.30	9823.2080
63	10	32	85	117	59	41	10	0.90	9823.0100
63	10	32	120	152	94	41	10	1.20	9823.1100
63	10	32	160	192	134	41	10	1.50	9823.2100
63	12	32	90	122	64	46	10	1.00	9823.0120
63	12	32	120	152	94	46	10	1.15	9823.1120
63	12	32	160	192	134	46	10	1.50	9823.2120
63	14	34	90	122	64	46	10	1.00	9823.0140
63	14	34	120	152	94	46	10	1.25	9823.1140
63	14	42	160	192	134	46	10	1.60	9823.2140
63	16	34	95	127	69	49	10	0.95	9823.0160
63	16	34	120	152	94	49	10	1.20	9823.1160
63	16	42	160	192	134	49	10	1.70	9823.2160
63	18	42	95	127	69	49	10	1.10	9823.0180
63	18	42	120	152	94	49	10	1.50	9823.1180
63	18	51	160	192	134	49	10	1.80	9823.2180
63	20	42	100	132	74	51	10	1.15	9823.0200
63	20	42	120	152	94	51	10	1.45	9823.1200
63	20	51	160	192	134	51	10	1.80	9823.2200
63	25	53	115	147	89	57	10	1.30	9823.0250
80	6	27	85	125	59	36	10	1.25	9824.0060
80	6	27	160	200	134	36	10	1.80	9824.1060
80	8	27	85	125	59	36	10	1.25	9824.0080
80	8	27	160	200	134	36	10	1.80	9824.1024
80	10	32	90	130	64	41	10	1.35	9824.0100
80	10	32	160	200	134	41	10	2.00	9824.1100
80	12	32	95	135	69	46	10	1.35	9824.0120
80	12	32	160	200	134	46	10	1.95	9824.1120
80	14	34	95	135	69	46	10	1.45	9824.0140
80	14	34	160	200	134	46	10	2.10	9824.1140
80	16	34	100	140	74	49	10	1.50	9824.0160



Art. **9824** THERMAL EXPANDING CHUCK HSK-A TO DIN 69882-8

Art. **9825**

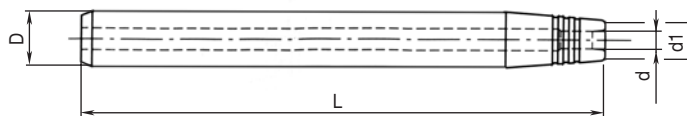
Nominal size HSK-A	Dimensions						Adjustment V	Weight (kg)	Art. N°.
	Ø d	Ø d1	A	L	L1	L2			
80	16	34	160	200	134	49	10	2.10	9824.1160
80	18	42	100	140	74	49	10	1.50	9824.0180
80	18	42	160	200	134	49	10	2.30	9824.1180
80	20	42	105	145	79	51	10	1.60	9824.0200
80	20	42	160	200	134	51	10	2.30	9824.1200
80	25	53	115	155	89	57	10	1.70	9824.0250
80	25	53	160	200	134	57	10	2.95	9824.1250
100	6	27	85	135	56	36	10	2.15	9825.0060
100	6	27	160	210	131	36	10	2.50	9825.1060
100	8	27	85	135	56	36	10	2.15	9825.0080
100	8	27	160	210	131	36	10	2.50	9825.1080
100	10	32	90	140	61	41	10	2.25	9825.0100
100	10	32	160	210	131	41	10	2.90	9825.1100
100	12	32	95	145	66	46	10	2.25	9825.0120
100	12	32	160	210	131	46	10	2.80	9825.1120
100	14	34	95	145	66	46	10	2.30	9825.0140
100	14	34	160	210	131	46	10	3.00	9825.1140
100	16	34	100	150	71	49	10	2.30	9825.0160
100	16	34	160	210	131	49	10	3.00	9825.1160
100	18	42	100	150	71	49	10	2.50	9825.0180
100	18	42	160	210	131	49	10	3.00	9825.1180
100	20	42	105	155	76	51	10	2.55	9825.0200
100	20	42	160	210	131	51	10	3.35	9825.1200
100	25	53	115	165	86	57	10	3.10	9825.0250
100	25	53	160	210	131	57	10	3.60	9825.1250

Art. **9829** TOOL EXTENSION

For thermal expanding chucks

Application:

- Clamping depth: min.2-3xD
- For shank form: HA, HB, HE (DIN 6535)



D	Dimensions		L	Weight (kg)	Art. N°.
	Ø d	Ø d1			
16	6	10	160	0.25	9829.0160
20	6	14	160	0.35	9829.0200
20	8	14	160	0.35	9829.1200
25	8	19	160	0.55	9829.0250
25	10	20	160	0.55	9829.1250
25	12	20	160	0.55	9829.2250
25	14	20	160	0.45	9829.3250
25	16	22	160	0.45	9829.4250

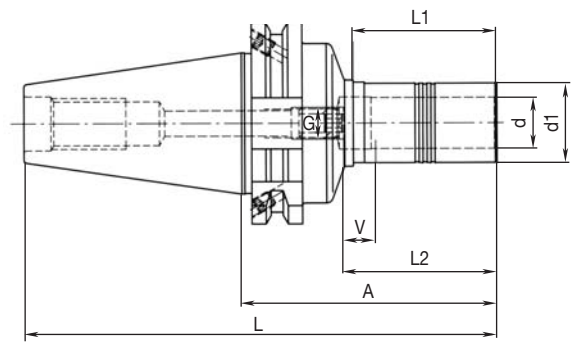


Art. 9840 POLYGON CHUCK TRIBOS-S ISO 40

Location shank ISO 40 to DIN 69871 AD/B with axial tool length adjustment

Application:

- TRIBOS-S: for precision and light cutting
- For shank form: HA, HB, HE (DIN 6535)



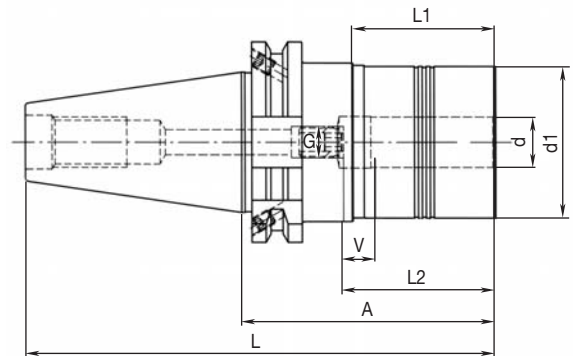
Nominal size ISO	Dimensions							Adjustment V	Weight (kg)	Art. N°.
	Ø d	Ø d1	A	L	L1	L2	G			
40	6	10	80	148.4	35	37	M5	10	0.90	9840.0060
40	8	13	80	148.4	35	37	M6	10	0.95	9840.0080
40	10	16	80	148.4	40	42	M8x1	10	0.95	9840.0100
40	12	19	80	148.4	45	47	M8x1	10	1.00	9840.0120
40	14	22	80	148.4	45	47	M10x1	10	1.00	9840.0140
40	16	25	80	148.4	45	48	M10x1	10	1.00	9840.0160
40	18	28	80	148.4	45	48	M10x1	10	1.05	9840.0180
40	20	30	80	148.4	45	52	M10x1	10	1.05	9840.0200
40	25	36	80	148.4	45	57	M10x1	10	1.10	9840.0250

Art. 9842 POLYGON CHUCK TRIBOS-R ISO 40

Location shank ISO 40 to DIN 69871 AD/B with axial tool length adjustment

Application:

- TRIBOS-R: for heavy-duty cutting
- or shank form: HA, HB, HE (DIN 6535)



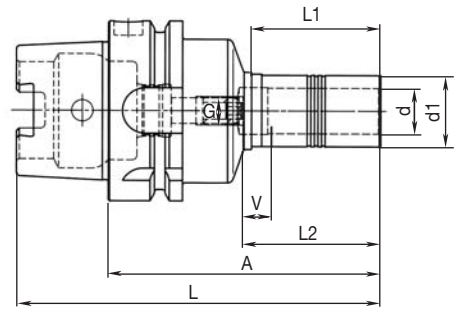
Nominal size ISO	Dimensions							Adjustment V	Weight (kg)	Art. N°.
	Ø d	Ø d1	A	L	L1	L2	G			
40	6	25	70	138.4	35	37	M5	10	1.10	9842..0060
40	8	28	70	138.4	35	37	M6	10	1.10	9842.0080
40	10	35	75	143.4	40	42	M8x1	10	1.10	9842.0100
40	12	42	80	148.4	45	47	M8x1	10	1.10	9842.0120
40	14	48	80	148.4	45	47	M10x1	10	1.10	9842.0140
40	16	48	80	148.4	45	48	M10x1	10	1.20	9842.0160
40	18	48	80	148.4	45	48	M10x1	10	1.20	9842.0180
40	20	48	80	148.4	45	52	M10x1	10	1.20	9842.0200

Art. 9843 POLYGON CHUCK TRIBOS-S HSK-A

Location shank HSK-A to DIN 69893-1 with axial tool length adjustment

Application:

- TRIBOS-S: for precision and light cutting
- For shank form: HA, HB, HE (DIN 6535)



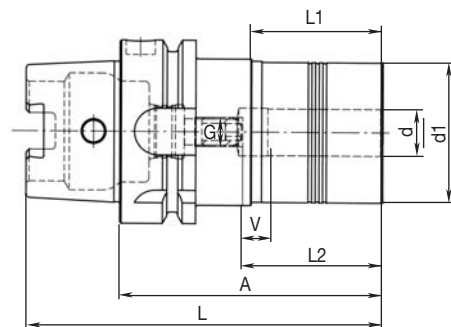
Nominal size HSK-A	Dimensions							Adjustment V	Weight (kg)	Art. N°.
	Ø d	Ø d1	A	L	L1	L2	G			
63	6	10	80	112	35	37	M5	10	0.70	9843.0060
63	8	13	80	112	35	37	M6	10	0.70	9843.0080
63	10	16	85	117	40	42	M8x1	10	0.75	9843.0010
63	12	19	90	122	45	47	M8x1	10	0.80	9843.0120
63	14	22	90	122	45	47	M10x1	10	0.85	9843.0140
63	16	25	95	127	45	48	M10x1	10	0.85	9843.0160
63	18	28	95	127	45	48	M10x1	10	1.05	9843.0180
63	20	30	100	132	45	52	M10x1	10	1.05	9843.0200
63	25	36	100	132	45	57	M10x1	10	1.10	9843.0250

Art. 9844 POLYGON CHUCK TRIBOS-R HSK-A

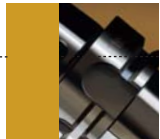
Location shank HSK-A to DIN 69893-1 with axial tool length adjustment

Application:

- TRIBOS-R: for heavy-duty cutting
- For shank form: HA, HB, HE (DIN 6535)



Nominal size HSK-A	Dimensions							Adjustment V	Weight (kg)	Art. N°.
	Ø d	Ø d1	A	L	L1	L2	G			
63	6	25	70	102	35	37	M5	10	0.90	9844.0060
63	8	28	70	102	35	37	M6	10	0.90	9844.0080
63	10	35	80	112	40	42	M8x1	10	0.90	9844.0100
63	12	42	85	117	45	47	M8x1	10	0.90	9844.0120
63	14	48	85	117	45	47	M10x1	10	0.90	9844.0140
63	16	48	90	122	45	48	M10x1	10	1.25	9844.0160
63	18	48	90	122	45	48	M10x1	10	1.25	9844.0180
63	20	48	90	122	45	52	M10x1	10	1.25	9844.0200

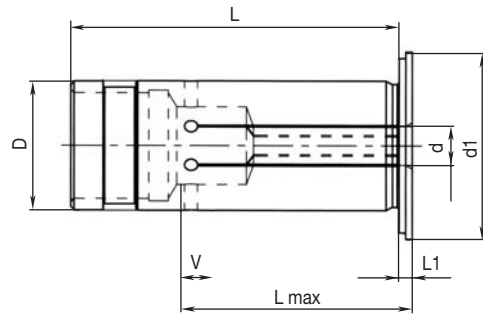


Art. 9845 ADAPTOR SLEEVE

For TRIBOS polygon chucks to reduce clamping diameter

Application:

- Without peripheral cooling: slotted collar, no coolant seal
- For shank form: HA, HB, HE (DIN 6535)



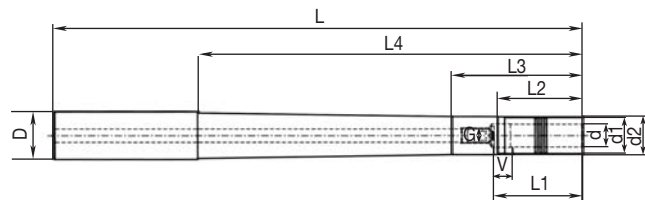
Dimensions										
D	Ø d	Ø d1	L	L max.	L1	Adjustment V	Weight (kg)	Art. N°.		
12	3	19	45.0	26.5	2	10	0.10	9845.0120		
12	4	19	45.0	26.5	2	10	0.10	9845.1120		
12	6	19	45.0	34.5	2	10	0.10	9845.2120		
12	8	19	45.0	34.5	2	10	0.10	9845.3120		
20	6	29	50.5	37.5	2	10	0.10	9845.0200		
20	8	29	50.5	37.5	2	10	0.10	9845.1200		
20	10	29	50.5	42.5	2	10	0.10	9845.2200		
20	12	29	50.5	47.5	2	10	0.10	9845.3200		
20	14	29	50.5	47.5	2	10	0.10	9845.4200		
20	16	29	50.5	47.5	2	10	0.10	9845.5200		

Art. 9846 TOOL EXTENSION

With axial tool length adjustment for TRIBOS polygon chucks

Application:

- For shank form: HA, HB, HE (DIN 6535)



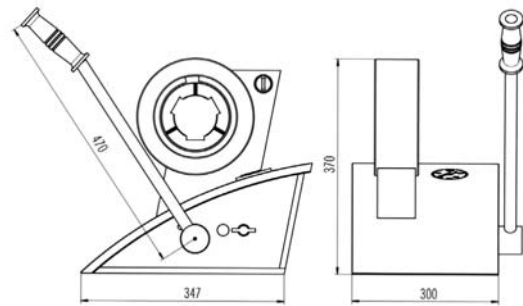
Dimensions												
D	Ø d	Ø d1	Ø d2	L	L1	L2	L3	L4	G	Adjustment V	Weight (kg)	Art. N°.
12	3	9	10	100	28	22.5	29.5	55	-	-	0.08	9846.0120
12	4	9	11	100	28	22.5	29.5	55	-	-	0.08	9846.1120
20	6	10	13	100	37	35.0	40.0	50	M5	10	0.186	9846.0200
20	6	10	13	150	37	35.0	40.0	100	M5	10	0.266	9846.1200
20	8	13	15	100	37	35.0	40.0	50	M6	10	0.195	9846.2200
20	8	13	15	150	37	35.0	40.0	100	M6	10	0.278	9846.3200
20	10	16	18	100	42	40.0	45.0	50	M8x1	10	0.198	9846.4200
20	10	16	18	150	42	40.0	45.0	100	M8x1	10	0.292	9846.5200
20	12	19	-	100	47	45.0	-	50	M8x1	10	0.200	9846.6200
20	12	19	-	150	47	45.0	-	100	M8x1	10	0.318	9846.7200

Art 9849 CLAMPING DEVICE

For TRIBOS polygon chucks

Application:

- Hydraulic clamping device
- With hand pump for rapid build-up of clamping pressure
- No external power source required (electrical, air, etc)

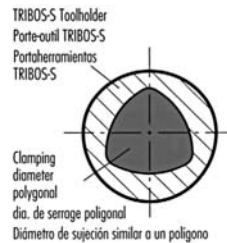
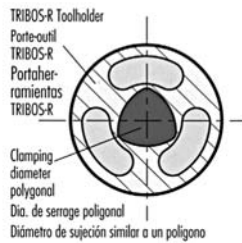


Weight (kg)

29.50

Art. N°.

9849.0000



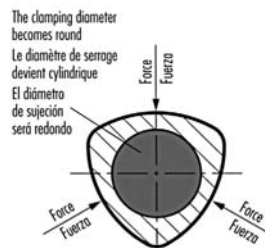
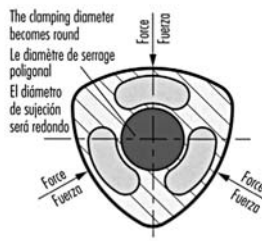
The function

1. Special geometry

In the unclamped position, the clamping diameter of the TRIBOS toolholder is similar to a polygon.

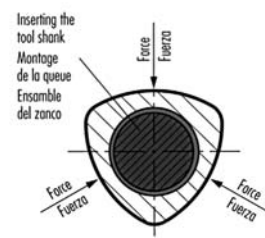
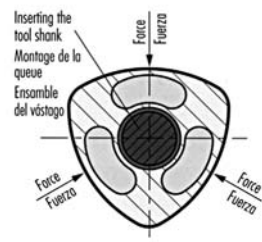
2. Activating the force

By means of a clamping device with special inserts, precise force is generated at 3 points on the toolholder. The clamping diameter is transformed into a circle.



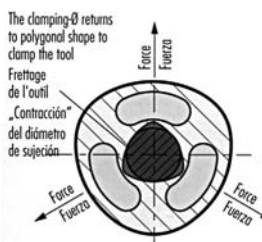
3. Insertion of the tool shank

The tool shank of the cutting tool can now be inserted into the clamping diameter of the TRIBOS toolholder.

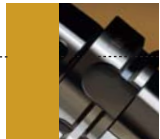


4. Clamping the tool

When the clamping device is released and the influential forces on the outside of the toolholder are removed, the clamping diameter returns to its initial polygonal shape and clamps the tool shank. The procedure of clamping is complete.



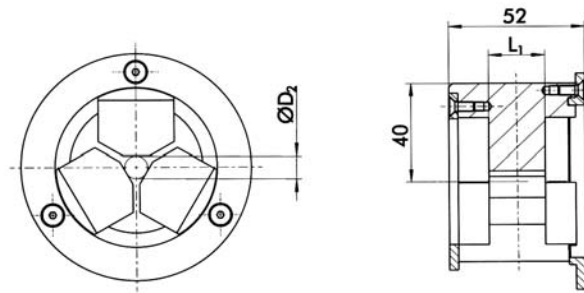
All the deformations happen within the elastic range of the material.



Art.9847 REDUCING INSERT FOR TRIBOS-S

For clamping device

Application:
- For clamping and releasing cylindrical shanks in TRIBOS-S polygon chucks

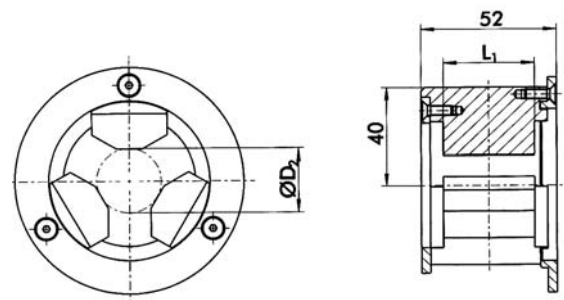


For clamping diameter	Dimensions			Art. N°.
Ø d	Ø D2	L1		
3	9	45	9847.0030	
4	9	45	9847.0040	
6	10	45	9847.0060	
8	13	45	9847.0080	
10	16	45	9847.0100	
12	19	45	9847.0120	
14	22	45	9847.0140	
16	25	45	9847.0160	
18	28	45	9847.0180	
20	30	45	9847.0200	
25	36	45	9847.0250	

Art.9848 REDUCING INSERT FOR TRIBOS-R

For clamping device

Application:
- For clamping and releasing cylindrical shanks in TRIBOS-R polygon chucks



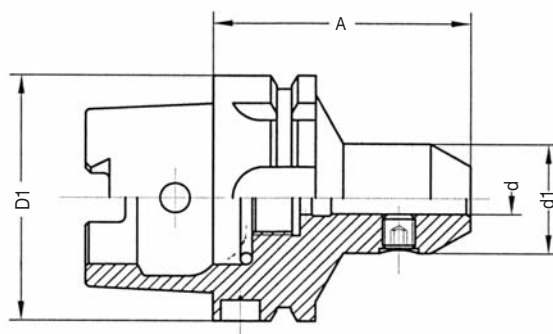
For clamping diameter	Dimensions			Art. N°.
Ø d	Ø D2	L1		
6	25	45	9848.0060	
8	28	45	9848.0080	
10	35	45	9848.0100	
12	42	45	9848.0120	
14	48	45	9848.0140	
16	48	45	9848.0160	
18	48	45	9848.0180	
20	48	45	9848.0200	

Art. **9860** MECHANICAL CHUCKS HSK-A TO DIN 69893 - 1

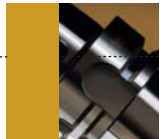
Art. **9861**

Art. **9862**

For cylindrical shanks DIN 1835 B (Weldon)



HSK-A Nominal Size (D1)	Ø d	A	Ø d1	Art. N°.
50	6	65	25	9860.0060
50	8	65	28	9860.0080
50	10	65	35	9860.0100
50	12	80	42	9860.0120
50	14	80	44	9860.0140
50	16	80	48	9860.0160
50	18	80	50	9860.0180
50	20	80	52	9860.0200
<hr/>				
63	6	65	25	9861.0060
63	8	65	28	9861.0080
63	10	65	35	9861.0100
63	12	80	42	9861.0120
63	14	80	44	9861.0140
63	16	80	48	9861.0160
63	18	80	50	9861.0180
63	20	80	52	9861.0200
63	25	110	65	9861.0250
63	32	110	72	9861.0320
<hr/>				
100	6	80	25	9862.0060
100	8	80	28	9862.0080
100	10	80	35	9862.0100
100	12	80	42	9862.0120
100	14	80	44	9860.0140
100	16	100	48	9860.0160
100	18	100	50	9860.0180
100	20	100	52	9860.0200
100	25	100	65	9860.0250
100	32	100	72	9860.0320
100	40	110	80	9860.0400

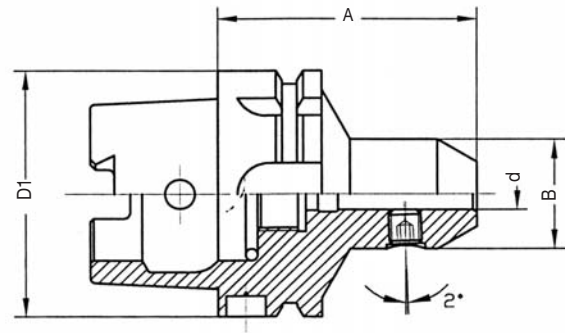


Art. **9863** MECHANICAL CHUCKS HSK-A TO DIN 69893 - 1

Art. **9864**

Art. **9865**

For cylindrical shanks DIN 1835 E (Whistle Notch)



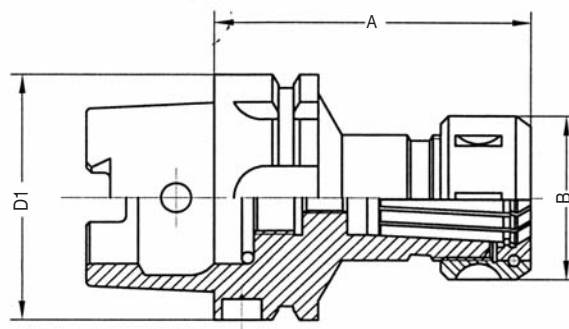
HSK-A Nominal Size (D1)	Ø d	A	B	Art. N°.
50	6	65	25	9863.0060
50	8	65	28	9863.0080
50	10	65	35	9863.0100
50	12	80	42	9863.0120
50	14	80	44	9863.0140
50	16	80	48	9863.0160
50	18	80	50	9863.0180
50	20	80	52	9863.0200
<hr/>				
63	6	65	25	9864.0060
63	8	65	28	9864.0080
63	10	65	35	9864.0100
63	12	80	42	9864.0120
63	14	80	44	9864.0140
63	16	80	48	9864.0160
63	18	80	50	9864.0180
63	20	80	52	9864.0200
63	25	110	65	9864.0250
63	32	110	72	9864.0320
<hr/>				
100	6	80	25	9865.0060
100	8	80	28	9865.0080
100	10	80	35	9865.0100
100	12	80	42	9865.0120
100	14	80	44	9865.0140
100	16	100	48	9865.0160
100	18	100	50	9865.0180
100	20	100	52	9865.0200
100	25	100	65	9865.0250
100	32	100	72	9865.0320
100	40	110	80	9865.0400

Art. **9866** MECHANICAL COLLET CHUCKS 1:10 DIN 69893 FORM A HSK-A

Art. **9867**

Art. **9868**

For collets as per DIN 6388 A, B and E



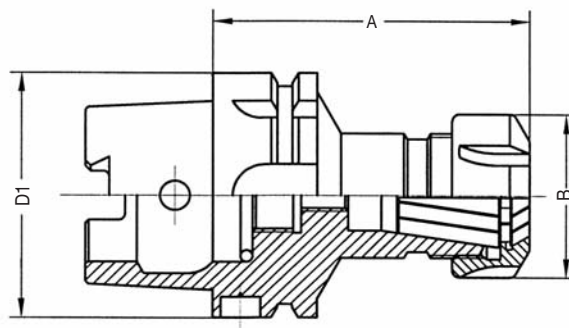
HSK-A Nominal Size (D1)	Clamping range d1	B	A	Art. N°.
50	2-16	43	80	9866.0160
63	2-16	43	80	9867.0160
63	2-25	60	120	9867.0250
100	2-16	43	80	9868.0160
100	2-25	60	120	9868.0250

Art. **9870** MECHANICAL COLLET CHUCKS 8° DIN 69893 FORM A HSK-A

Art. **9871**

Art. **9872**

For collets as per DIN 6499



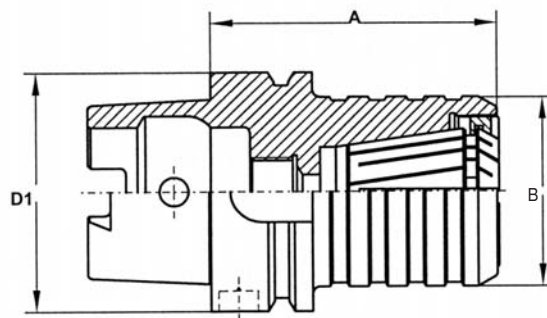
HSK-A Nominal Size (D1)	Type	Clamping range d1	B	A	Art. N°.
50	ER 16	1-10	28	100	9870.0160
50	ER 25	1-16	42	80	9870.0250
50	ER 32	2-20	50	100	9870.0320
63	ER 16	1-10	28	100	9871.0160
63	ER 16	1-10	28	160	9871.1160
63	ER 25	1-16	42	80	9871.0250
63	ER 32	2-20	50	100	9871.0320
63	ER 40	3-26	63	120	9871.0400
100	ER 16	1-10	28	100	9872.0160
100	ER 16	1-10	28	160	9872.1160
100	ER 32	2-20	50	100	9872.0320
100	ER 40	3-26	63	120	9872.0400



Art. 9873 MECHANICAL COLLET CHUCKS 8° DIN 69893 FORM A HSK-A

Art. 9874

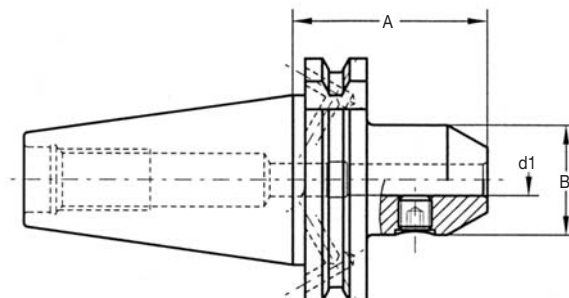
With inside clamping nut for collets as per DIN 6499



HSK-A Nominal Size (D1)	Type	Clamping range d1	B	A	Art. N°.
50	ER 16	1-10	32	55	9873.0160
50	ER 25	1-16	42	65	9873.0250
63	ER 16	1-10	32	55	9874.0160
63	ER 25	1-16	42	65	9874.0250
63	ER 32	2-20	50	70	9874.0320

Art. 9876 MECHANICAL CHUCKS DIN 69871 AD/B ISO 40

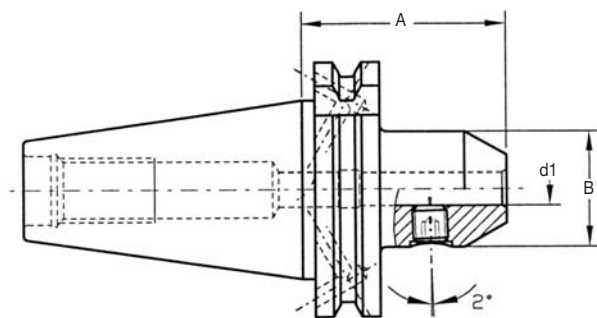
For cylindrical shanks DIN 1835 B (Weldon)



Taper size	d1	A	B	Art. N°.
40	6	50	25	9876.0060
40	8	50	28	9876.0080
40	10	50	35	9876.0100
40	12	50	42	9876.0120
40	14	50	44	9876.0140
40	16	63	48	9876.0160
40	18	63	50	9876.0180
40	20	63	52	9876.0200
40	25	100	65	9876.0250
40	32	100	72	9876.0320

Art. 9888 MECHANICAL CHUCKS DIN 69871 AD/B ISO 40

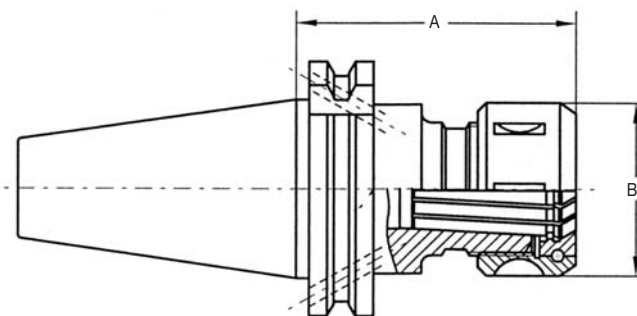
For cylindrical shanks DIN 1835 E (Whistle Notch)



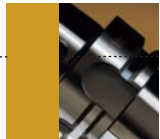
Taper size	d1	A	B	Art. N°.
40	6	50	25	9888.0060
40	8	50	28	9888.0080
40	10	50	35	9888.0100
40	12	50	42	9888.0120
40	14	50	44	9888.0140
40	16	63	48	9888.0160
40	18	63	50	9888.0180
40	20	63	52	9888.0200
40	25	100	65	9888.0250
40	32	100	72	9888.0320

Art. 9890 COLLET CHUCKS 1:10 DIN 69871 AD/B ISO 40

For collets as per DIN 6388 A, B and E

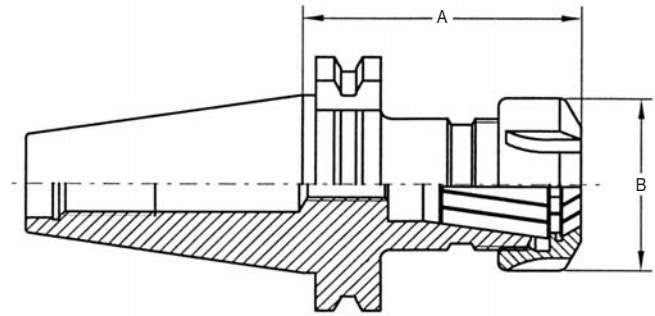


Taper size	Clamping range d1	B	A	Art. N°.
40	2-16	43	70	9890.0160
40	2-16	43	100	9890.1160
40	2-16	43	160	9890.2160
40	2-25	60	70	9890.0250
40	2-25	60	100	9890.1250
40	2-25	60	160	9890.2250
40	4-32	72	80	9890.0320
40	4-32	72	100	9890.1320
40	4-32	72	160	9890.2320



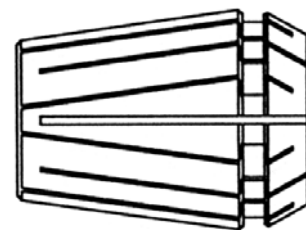
Art. 9891 COLLET CHUCKS 8° DIN 69871 AD

For collets as per DIN 6499



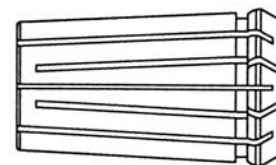
Taper size	Type	Clamping range d1	B	A	Art. N°.
40	ER 16	1-10	32	63	9891.0160
40	ER 16	1-10	32	100	9891.1160
40	ER 16	1-10	32	160	9891.2160
40	ER 25	1-16	42	60	9891.0250
40	ER 25	1-16	42	100	9891.1250
40	ER 25	1-16	42	160	9891.2250
40	ER 32	3-20	50	70	9891.0320
40	ER 32	3-20	50	100	9891.1320
40	ER 32	3-20	50	160	9891.2320
40	ER 40	4-26	63	80	9891.0400
40	ER 40	4-26	63	100	9891.1400
40	ER 40	4-26	63	160	9891.2400

Art. 9892 COLLETS AFTER DIN 6499 SYSTEM REGOFIX



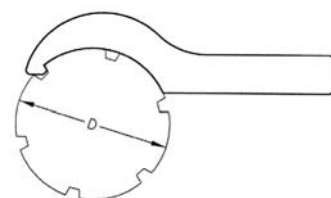
Type	Clamping range d1	Art. N°.
426 E/ ER 16	1-10	9892.0160
428 E/ ER 20	2-13	9892.0200
430 E/ ER 25	2-16	9892.0250
470 E/ ER 32	3-20	9892.0320
472 E/ ER 40	4-26	9892.0400

Art. **9893** COLLETS AFTER DIN 6388 SYSTEM OZ



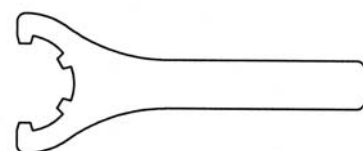
Type	Clamping range d1	Art. N°.
415 E/ OZ 16	2-16	9893.0160
462 E/ OZ 25	2-25	9893.0250
467 E/ OZ 32	4-32	9893.0320

Art. **9894** SPANNER FOR NUTS DIN 6388

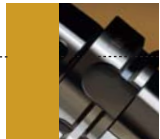


D	SW	Art. N°.
18	18-16	9894.0180
26	26-25	9894.0260
30	30-28	9894.0300
35	35-34	9894.0350
43	43-40	9894.0430
60	60-58	9894.0600
72	72-68	9894.0720
85	85-80	9894.0850

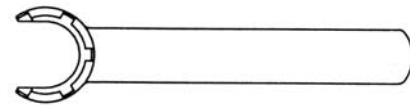
Art. **9895** SPANNER FOR NUTS DIN 6499



D	Art. N°.
18	9895.0180
20	9895.0200
25	9895.0250
32	9895.0320
40	9895.0400
50	9895.0500



Art. **9896** SPANNER FOR NUTS DIN 6499 MINI



	D	Art. N°
	8	9896.0001
	11	9896.0002
	16	9896.0003
	20	9896.0004
	25	9896.0005

Art. **9897** COOLANT HOSE

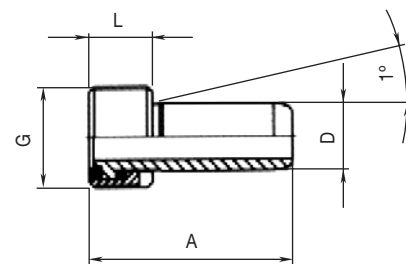
For HSK-A location shank

Product details:

- Coolant hose with 2-0 rings and locking collar

Application:

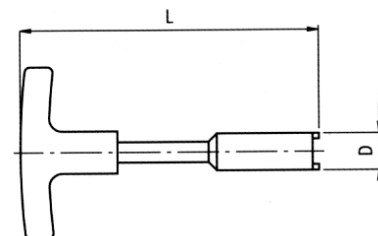
- Easily accessible angular movement 1° self-centering, axial seal



HSK-A Nominal Size	Dimensions				Art. N°.
	A	L	G	D	
50	33.2	9.5	M16x1	10	9897.0100
63	36.6	11.5	M18x1	12	9897.0120
80	40.1	13.5	M20x1.5	14	9897.0140
100	44.2	15.5	M24x1.5	16	9897.0160

Art. **9898** KEY

For fitting coolant hose



HSK-A Nominal Size	L	D	Art. N°.
50	182	15	9898.0150
63	182	17	9898.0170
80	186	18.5	9898.0185
100	186	22.5	9898.0225